



## MCJLE NEWS

### Director's Message

July 2011

Dear Sensei-gata,

I hope you have all had a relaxing break and were able to keep warm.

Our thoughts are still with our friends and colleagues in Japan and for the Japanese population in general who are still feeling the effects of the tragedy which occurred in March. I am aware that schools and teacher communities are still working to support the recovery effort.

Recently I was fortunate enough to attend the AFMLTA conference and much of the focus was on the Australian Curriculum and the future of languages in that context. There were also many presentations from teachers of Japanese who have included innovative programs and /or activities into their curriculum. We hope to feature some of them on our website in the coming months. With the declining visibility of Japanese in the media, politics and even education, teachers are becoming creative in using technology and community linking projects to motivate students to further their study of Japanese; we will feature these in the coming months.

I gave a presentation at the conference as part of a group presentation 'Asia Education panel: the NALSSP languages' looking at the four reports written on the NALSSP languages and what has happened since the reports were published. It was pleasing to hear a response after the presentation from a representative from the Federal government that at least two of our recommendations are being considered and work toward implementing them has begun. I will keep you informed of developments.

In this edition please look at professional development opportunities and some interesting links that we have included.

I hope the next few months are productive for you and your students.

Anne de Kretser

### Inside this issue:

Good-bye to Miho Okutsu	2
Try these links	2
Australia -Japan Relations Essay Contest 2011	2
The Japanese Language Speech Contest 2011	3
<b>Donation Thank you</b>	<b>4</b>
Koto Performance	4
Peace Concert 2011	4
Hiroshima Peace Day Concert	5
MCJLE Resource Postal Service	6
Join our WIKI	7
Study/Travel Grant	8
Nihongo Victoria	8
<b>Japanese Festivals and Events</b>	<b>9-11</b>
Professional Development 2011	11
Forms	12-18

### MCJLE Contacts

Anne de Kretser, Director

Monday, Tuesday and Thursday

Tel : 03 9905 2313 Fax 03 9905 3874

[anne.dekretser@monash.edu](mailto:anne.dekretser@monash.edu)

Hiroko Liu, Administrative Assistant

Monday, Thursday and Friday

9:00am to 2:30pm Tel : 03 9905 9478

[hiroko.liu@monash.edu](mailto:hiroko.liu@monash.edu) or [arts-mcjle@monash.edu](mailto:arts-mcjle@monash.edu)

## Good-bye to Miho Okutsu

Last month we said good-bye to one of our well respected teachers of Japanese, Miho Okutsu who returned to Japan.

Miho started teaching Japanese at Bentleigh Secondary College after finishing her graduate diploma at UTS in 1998 and DEET's ATJ in 1999. While at Bentleigh SC she also took on the role of LOTE co-ordinator for many years. Miho is regarded as extremely hard working and a very effective teacher. She expected a lot from her students who generally enjoyed being challenged and worked to meet the challenges Miho set them.

In addition to being an excellent teacher Miho contributed to the teaching and learning of Japanese by creating resource materials which have been widely distributed in Victoria, South Australia and Tasmania.

Miho was the/ or a contributing author for many of the materials produced by the MCJLE as well as the textbook, HAI IMA and the vocabulary book, Let's たんご！.

Miho made a large contribution to the teaching and learning of Japanese for over a decade and although she will be greatly missed we wish her well with her future.

## Try these links

Thank you to teachers who have contributed these links to the NVEG.

Great free printable worksheets for primary students

<http://kotoba.littlestar.jp/kisetsu-sozai.html>

This website allows you to make 3D books so you can see the page, with pop-up elements, from different angles. There is a virtual reality mode too - check it out - amazing! It is free, easy to use and you can type page labels and character speech bubbles directly in Japanese. Some costs may apply. <http://www.zooburst.com/>

When you are introducing Hiragana "a" to students, try this site. It is highly interactive; it has sound, moving images of Hiragana "a" which is written by you (or a student)

<http://www.nhk.or.jp/design-ah/ah-song/>

## Australia-Japan Relations Essay Contest 2011

The essay contest is conducted by the Embassy of Japan and Consulates-General of Japan in Australia. Students from any Australian school between Years 7 to 12 are eligible to enter.

The contest is open to students enrolled in Australian secondary schools, both public and private, including 7th Year primary schools in the Northern Territory, Queensland, South Australia and Western Australia.

### Divisions:

1. Junior A Division (Years 7-8) [700-1000 words]
2. Junior B Division (Years 9-10) [1100-1400 words]
3. Senior Division (Years 11-12) [1500-1800 words]

Submissions for the 2011 Essay Contest will close *9 September 2011*.

For further information and to apply please download the application guidelines, essay topics and coversheet from the embassy website. [http://www.au.emb-japan.go.jp/e-web/education\\_essay.html](http://www.au.emb-japan.go.jp/e-web/education_essay.html)

# The Japanese Language Speech Contest 2011

The Japanese Language Speech Contest 2011

Victorian State Final The Japanese Language Speech Contest Victoria and The Consulate-General of Japan, Melbourne, are proud to present the 42nd Annual Japanese Language Speech Contest.

The aim of the contest is to encourage learners of Japanese who do not speak Japanese as their first language, as well as background speakers whose parent/s speak Japanese as their first language, to practice and consolidate their language skills in a challenging context.

## Divisions:

The Victorian State Final Contest and National Final Contest have four categories. These are -

1. High School Senior Division (2.5 ~ 3 mins)
2. Open Beginner Division (2.5 ~ 3 mins)
3. Open Division (4.5 ~ 5 mins)
4. Background Speaker Division (4.5 ~ 5 mins)

## Subject of speech:

The subject, content and form of the speeches are left open to each contestant. Entrants who have competed in previous contests may not use the same speech (this includes title and content) presented in previous years.

## Prizes:

First place winners in each Division will proceed to the Australian National Final in Sydney on Saturday 15 October 2011.

The winner of the special *Melbourne-Osaka Sister Cities Award* (to be chosen from Division 2, 3 or 4 entrants) will receive one return flight to Osaka with accommodation. (The full information will be released as soon as it is finalised.)

## Important information:

Guidelines and Handy Hints; Application Form; Letter to Teachers; Reflections from Previous Participants; Report from Melbourne-Osaka Sister City Award Winner.

## Date of Victorian Final:

To be held on **Sunday, 4 September 2011**

*Spectators and audience welcome, free of charge.*

*Entries close Wednesday 24 August 2011*

## Tasmanian State Final

The Tasmanian State Final will be held on the 15th of Au-

gust. The contact for the Tasmanian contest is Ms. Kim Rolands, The Speech Committee, Japanese Teachers Network, TAS - Ph: (03) 6210 2266.

## South Australian State Final

The South Australian Speech Contest will be held at 7 pm on Monday September 19th. The contact for the South Australian contest is Mr. Grant Nielsen, [gnielsen@immanuel.sa.edu.au](mailto:gnielsen@immanuel.sa.edu.au).



## Donation Thank you



Thank you for Ann Eagles, Sharon Matheson and Ananda Perera for their kind donation of resources. The materials will be placed in the MCJLE Resource Collection and will be available to all teachers for borrowing.

## Koto Performance by Satsuki Odamura

Internationally renowned Koto player, Satsuki Odamura, will perform in August at the Melbourne Recital Centre as part of a concert presented by the Recital Centre, ABC Radio National's Music Deli and Multicultural Arts Victoria. The concert will also feature performances demonstrating a variety of styles from China, Vietnam and Mongolia.

For further information and to purchase tickets please visit the Melbourne Recital Centre website.

<http://www.melbournerecital.com.au/whatson/buytix?perfid=2709>

**When:** August 27, 4:00 pm and 5:30 pm

**Where:** Elisabeth Murdoch Hall, Melbourne Recital Centre, Cnr Southbank Boulevard & Sturt Street, Southbank, Victoria

## Peace Concert 2011

NO MORE NUCLEAR DISASTERS

Join the call for world peace and sustainability

**3-5 PM SATURDAY, 6TH AUGUST 2011**

@ State Library, Village Roadshow Theatrette ([map](#))

Tickets at door: \$15/\$10 conc.

**MC:** Rod Quantock

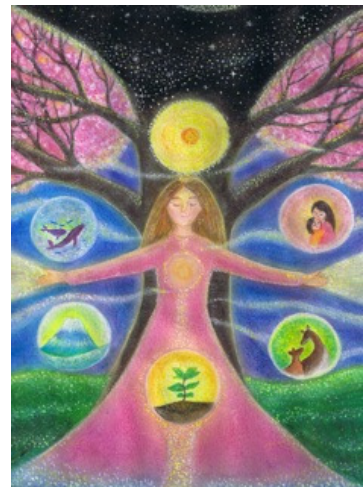
**Performers:**

Lily and King, Folk/Jazz/Roots

King Kadu and the Sunshine Sisters, Aboriginal Music

Tom Bolton Band, Acoustic Folk

Fuefukuro, Japanese Drums & Bamboo Flute



**Speakers:**

Felicity Hill, Women's International League for Peace and Freedom

Phillip White, Formerly of Citizens' Nuclear Information Center, Japan

Proceeds from the concert will go towards the victims of Japan's earthquake and tsunami.

We hope you can join us! <http://jfp.org.au/en/>

**The Melbourne Centre for Japanese Language Education is funded by an endowment from the Nippon Foundation with the overall program administered by the Tokyo Foundation**

# WE INVITE YOU TO ENJOY THE HIROSHIMA PEACE DAY CONCERT

All proceeds from the concert will go to the Japan Disaster Relief Fund.

Venue: St Michael's on Collins

Date: Sunday 7th August 2011

Time: 12.15pm - 1:15pm

Cost: \$15.00

Tickets at the door



*Featuring:*

Japanese flute and Wadaiko drum ensemble, Fuefukuro

Taiko drummers, Wadaiko Rindo

Noriko Tadano (Shamisen)

Adam Simmons (Shakuhachi)

Yukari Echo Choir

## ST MICHAEL'S

ON COLLINS—MELBOURNE

120 COLLINS STREET, MELBOURNE 3000

PHONE: (03) 9654 5120 FAX: (03) 9650 3863

WEB: [www.stmichaels.org.au](http://www.stmichaels.org.au) E: [office@stmichaels.org.au](mailto:office@stmichaels.org.au)

# **MCJLE Resource Collection Borrowing Postal Service**

## **\*For Interstate/Country/Outer Metropolitan Melbourne Teachers**

The MCJLE Resource Collection is available to all schools. The collection is quite substantial in size and so we can support the inclusion of interstate (SA & TAS) schools and country schools through a postal service.

Schools in Melbourne are also be able to use the service.

The collection which is managed by the Asian Studies Research Library staff and in particular, the Japanese librarian, Ms. Ayako Hatta, work cooperatively with the MCJLE to collectively borrow and post out materials to schools.

Teachers can use the online catalogue to decide which materials they wish to borrow.

The selected materials (if available) will be packaged and sent to schools for a two week borrowing period.

The cost of postage to the school will be borne by the MCJLE the return post must be paid for by the borrowing school. Teachers are able to borrow, flashcards, printed and multi-media materials. Big books and posters cannot be borrowed. Teachers may only borrow 8 items at a time.

### **How it works??**

1. Teachers look at the on-line catalogue
2. Teachers choose items relevant for their purpose
3. Teachers write the name of the item and call number on the borrowing form [see page 19 ]
4. Teachers fax the borrowing form to the MCJLE by Thursday 6pm
5. MCJLE processes all requests and forward to the Asian Studies Research Library for processing
6. MCJLE picks up and post the items on Mondays
7. Borrowing period is three weeks
8. Teachers post the items back to the MCJLE
9. MCJLE return the items to the library

This is a free service HOWEVER any items that are overdue will incur a cost which must be borne by the teacher.



### **How to find Materials**

1. Go to <http://library.monash.edu.au/>
2. Type "MCJLE" in the search box  
(You will find resources held in the MCJLE Collection)
3. Follow the prompts for searching using the catalogue you may only borrow items in the MCJLE Resource Collection.

### **\* Maximum 8 items**

We hope that you find this service useful and convenient.

We look forward to your feedback regarding it.



# Join our Wiki!!!! M CJLE Benrichou



Available to all teachers of Japanese.

The Melbourne Centre for Japanese Language Education has established a Wiki for teachers of Japanese. The Wiki is maintained by the M CJLE for teachers and the information placed there is checked for its appropriateness and relevance.

Information can be placed on the Wiki by teachers for the purpose of sharing with other teachers.

The M CJLE benrichou is designed to complement the Nihongo Victoria E-mail group. It is for posting information useful to others for an extended length of time NOT for asking questions or advertising upcoming events, please continue to use NVEG for that.

## What, Why, Who, How is Wiki

### What?

A Wiki is a secure, managed, space on the internet where members of that Wiki can share information on certain subjects. The tool used is workspaces for teachers.

### Why?

Many teachers find and want to share useful websites, information and teaching activities, ideas and strategies. A Wiki is a convenient place to post and store that information electronically in an organised manner. Members can easily access information and or post information for other teachers to access.

### Who?

Any teacher of Japanese who would like to become a member. Registration is essential and teachers must provide their name, school and their chosen user name before they will be given permission to access the M CJLE Wiki.

## How? THIS IS A FREE SERVICE [Step by step Guide]

1. Teachers get onto the wikispaces for teachers page and register  
<http://www.wikispaces.com/site/for/teachers>
2. Teachers send an e-mail requesting an invitation to join the **M CJLE benrichou** Wiki, to the Melbourne Centre for Japanese Language Education with the following information:
  - Name
  - School
  - Preferred e-mail address
  - User nameSend the e-mail to [mcjle@arts.monash.edu.au](mailto:mcjle@arts.monash.edu.au)
3. The M CJLE will then send an invitation through wikispaces for you to join our specific Wiki.
4. You will be notified by wikispaces when the invitation has been issued.
5. Start using the M CJLE benrichou WIKI
6. Let us know if there is anything we can do to improve our wiki or if you would like more pages [topics] added



## Study Grant/Travel Grant



### Study Grant

All qualified teachers of Japanese in Victoria, South Australia and Tasmania are invited to apply for a study grant to assist with the cost of undertaking post graduate studies related to the teaching of Japanese. The MCJLE offers grants of up to \$1,000 per semester to teachers wishing to further their studies.

All interested teachers should complete the application form on page 14 of this newsletter and send or fax it to the MCJLE.

### Travel Grant

Teachers of Japanese in Victoria, South Australia and Tasmania are invited to apply for travel grants to ASSIST them with the cost of travelling to seminars or conferences within their own state or interstate. Interested teachers should complete the application form on page 16 and post or fax it to the MCJLE.

Teachers, please be advised that payment can only be made after documentation verifying attendance at the nominated conference or seminar is received by our office.

## Using Nihongo Victoria E-mail

ALL teachers of Japanese are welcome to join the NVEG. This group is designed to keep teachers networked and provide a system by which they can exchange useful information about the teaching and learning of Japanese language, resources, websites, curriculum and extra curricular activities.

**To ensure that the NVEG is as useful and efficient as possible please avoid posting personal messages on-line and avoid having conversations on-line.**

Used properly the NVEG is a useful tool but before hitting 'reply to all' consider whether 'all' need to read the e-mail. This way we avoid in-box over load of e-mails that are not relevant to everyone.

**If you wish to join the Nihongo Victoria E-mail Group please provide us with the following details .**

A) If you are currently teaching Japanese at a school or institution in Australia and you will be using your school email address (eg. [yyyy.zzzz@edumail.vic.gov.au](mailto:yyyy.zzzz@edumail.vic.gov.au) ), send an email message from that email account to [arts-mcjle@monash.edu](mailto:arts-mcjle@monash.edu).

B) If you are currently teaching Japanese at a school or institution in Australia and you will be using a personal email address (eg. [yyyy.zzzz@yahoo.com](mailto:yyyy.zzzz@yahoo.com) etc. ), send an email message from that email account to [arts-mcjle@monash.edu](mailto:arts-mcjle@monash.edu).

Please provide

- your name
- your school/institution name
- your school/institution phone number to avoid spam messages to the list)

C) If you are not currently employed at a school or an institution in Australia, you need a referee who is currently teaching Japanese at a school or institution. Send an email message from your preferred email account to [arts-mcjle@monash.edu](mailto:arts-mcjle@monash.edu).

# Japanese Festivals and Events

## Anniversaries of the Dropping of the Atomic Bombs and the End of World War II

At 8:15 a.m. on August 6, 1945, two U.S. B-29 bomber aircraft appeared in the sky above Hiroshima City, and one of them dropped a small parachute. Attached to this was the atomic bomb that took the lives of over 264,000 residents.

More than 90% of the city was damaged by the blast; around the epicenter, nearly all of the people died instantly, and most of the buildings were destroyed without a trace.



Three days later, at 11:02 a.m. on August 9, 1945, another atomic bomb was dropped on Nagasaki City, located at the north western tip of Kyushu. This time, the bomb left one third of the city in ashes. So far, around 150,000 people have died from the effect of the bomb.

Today, the epicenters of both the Hiroshima and Nagasaki blasts have been turned into Peace Memorial Parks. Each year on August 6 and 9, respectively, a ceremony is held at each park to remember the victims of the atomic bombs and to pray for eternal peace. Not only the residents of the two cities, but many Japanese, as citizens of the only nation the atomic bomb was dropped, prays for a world free of war and nuclear weapons.

World War II ended only days after the bombs were dropped, on August 15, 1945; Japan accepted the Potsdam Declaration by the Allied Powers, thereby surrendering unconditionally. It was in 1931 that Japan began fighting in China, and 1941 that it made a surprise attack on the U.S. Navy base at Pearl Harbor, Hawaii.

August 15 is now a day for remembering those who died in the war, and ceremonies are held throughout Japan. War not only takes the lives of countless people, but also affects everyone in the countries involved, making them unhappy. Therefore, the anniversary of the end of World War II is also a day for those who experienced the war to tell future generations about their tragic memories, and for everyone to renew the determination never again to repeat such foolishness.

## Bon Holidays

The Bon Festival is held to pray for the repose of the souls of one's ancestors. It's one of the biggest traditional events during the year, along with New Year's. It's sometimes called *o-bon* or *urabon*. In the past, it was held in the middle of the seventh month on Japan's traditional calendar.



Some regions therefore celebrate it in mid-July, although the old date is closer to mid-August.

Deceased family members are believed to revisit the homestead during Bon to be reunited with their family. To guide the souls back, a small bonfire is lit outside the house. This is called the *mu-kae-bi*, or welcoming flame.

The house is cleaned and dusted, and fruits and vegetables are offered at family altars. When Bon ends, the spirits are sent off with another bonfire, called *okuri-bi*. Some regions release small lanterns down as part of the *okuri-bi* ritual.

Many Buddhist temples hold a service called *urabon'e* during this time, and so a lot of people think Bon is a Buddhist tradition. But historians now think that indigenous Japanese practices combined with Buddhist concepts to give shape to the Bon customs observed today.

## Disaster Prevention Day

Many homes are busy preparing lunch at 11:58 a.m., and in a lot of kitchens, it's not unusual for people to be using a flame to cook food. This was the moment on September 1, 1923, that the Great Kanto Earthquake struck Tokyo, Yokohama, and surrounding regions. Measuring 7.9 on the Richter scale, the quake not only devastated homes and office buildings but claimed the lives of 140,000 people - many of them being engulfed in the fires that broke out after the temblor.

The date of the big tragedy - September 1 - was designated Disaster Prevention Day in 1960 in order to remind all of us to be prepared for any contingency.

Another reason for choosing September 1 is that the date has been considered for centuries to be particularly prone to typhoons. It's roughly 210 days from risshun, or the start of spring on the traditional calendar, and was thus called *nihaku-toka*, or literally 210 days. Farmers were especially worried about typhoons since they could wipe out the year's crop if they came just before harvest.



Japan is very prone to earthquakes. You probably still remember the Great Hanshin Earthquake that hit Kobe and its environs on January 17, 1995. The quake took more than 5,500 lives.

On Disaster Prevention Day emergency drills organized by local governments are held throughout the country. Some of these drills consist of ducking under desks to escape falling objects and evacuating from buildings. At many elementary and middle schools, September 1 is the first day of school after summer vacation. So a lot of schools carry out an evacuation drill as part of the back-to-school ceremony.

## Autumnal Moonlight Viewing

There is an old custom of celebrating the full moon on the fifteenth day of the eighth month on the traditional Japanese calendar. It's a very poetic and elegant practice, with people placing ornaments and offerings next to windows, on verandas, and in other places where one can see the moon. Vases are filled with pampas grass and autumnal herbs, and seasonal foods like dumplings, pears, persimmons, and grapes are placed on dishes.



Autumn consisted of the seventh, eighth, and ninth months of the year on the old Japanese calendar. The full moon in the middle autumnal month, called *chushu no meigetsu*, was considered particularly beautiful, as the air became crisper and the heat of summer subsided.

## Autumnal Equinox Day

September 23 or 24 is Autumnal Equinox Day, a national holiday. It's a day not just to mark the changing of seasons but also to pay our respects to our deceased parents, grandparents, and other family members.

The months of September, October, November are usually considered the autumn months, but technically speaking, fall is the period between the autumnal equinox and winter solstice.

The autumnal equinox is the day when the sun crosses the equator from the Northern to the Southern Hemisphere. By the modern Gregorian calendar, this date usually falls on September 22 or 23. On this day, the sun rises exactly in the east and sets exactly in the west, and day and night become the same length. From this day on, days begin getting shorter than nights in the Northern Hemisphere.

The Japanese have traditionally called the period around the autumnal and vernal (springtime) equinoxes *higan*. There's a saying that goes, "both the heat and cold end with *higan*." *Higan* lasts for seven days - beginning three days prior to the equinox and ending three days after it. It occurs twice a year, once when the blustery winter temperatures give way to spring and again when the heat subsides and the cool, crisp air of autumn arrives.

*Higan* has Buddhist origins. It means the "other side of the river of death." This side of the river is the world where we live, and the other side is the realm where the souls of those who have passed away dwell. To pray for the repose of deceased ancestors, visits are made to the family grave.

Bon in August (July in some regions) is a time when the souls of our ancestors come to visit us. On *higan*, it's our turn to visit them. Visiting the family grave usually means cleaning the tombstone, offering flowers and food, burning incense sticks, and praying. A popular offering is *ohagi*, made with glutinous rice covered with adzuki-bean paste or soybean flour. As *higan* approaches, confectioners become very busy trying to meet the expected demand for *ohagi*.

## Professional Development 2011

### 4 Day Seminar series for First time teachers of Year 11 and 12 Japanese Second Language (\*Application form is on page 12)

This seminar series is designed to help teachers navigate through teaching VCE for the first time. Teachers may attend one, some or all seminars but it is recommended that if possible all seminars are attended.

The seminars will explain:

the VCE course and assessment requirements

focus on the skills required by students

workshop writing outcomes and SACs

develop strategies for preparing students for examinations

Dates:

[Teachers are welcome to attend both the Year 11 and Year 12 sessions or just those relevant to them in 2011]

**Day 4: Thursday 25<sup>th</sup> August 2011 (Ref No. AUG2511) Year 12 : 9.30 - 3.30**

Year 12 examination technique....How to prepare students for the examinations

**Provided : Parking Permit and lunch**

# Melbourne Centre for Japanese Language Education

## Professional Development Registration Form

### First Time Teacher of Year 11 and 12 Japanese Second Language

Reference No.	Amount	Date	Closing Date	Apply
AUG2511	\$27.50	25/08/2011	08/08/2011	<input type="checkbox"/>

Name \_\_\_\_\_

School \_\_\_\_\_

School Address \_\_\_\_\_

\_\_\_\_\_ Post Code \_\_\_\_\_

Tel \_\_\_\_\_ Fax \_\_\_\_\_

E-mail (mandatory) \_\_\_\_\_

Dietary requirement \_\_\_\_\_

Parking Permit Request  Yes  No

Payment Option  Cheque (Please send a cheque prior to seminar)  Credit Card

Request Tax Invoice to school ABN No. \_\_\_\_\_

Please send the cheque payable to **MONASH UNIVERSITY**.

Credit Card Type  Visa  Master Expiry Date: /

Card No.

Card Holder's Name \_\_\_\_\_

Card Holder's Signature \_\_\_\_\_

**Complete the application form and return by fax or mail to MCJLE.**

Melbourne Centre for Japanese Language Education

Building 54, Monash University Victoria 3800 Australia

Tel (03) 9905 2313 Fax (03) 9905 3874 ABN 12 377 614 012

# Melbourne Centre for Japanese Language Education

## Study Grant Application Form

Name Mr/Mrs/Ms \_\_\_\_\_

Address \_\_\_\_\_

\_\_\_\_\_ Post Code \_\_\_\_\_

Home/Mobile Telephone number \_\_\_\_\_

School \_\_\_\_\_

Tel \_\_\_\_\_ Fax \_\_\_\_\_

E-mail \_\_\_\_\_

I have been teaching Japanese for \_\_\_\_\_ years (including 2010)

I am currently teaching at the following year levels \_\_\_\_\_

### TERTIARY QUALIFICATIONS (Please give details of institution, year of study and results)

You may include a copy of your academic record for this section. Also detail any additional courses you have completed. Clearly state whether or not you have a **major** in Japanese

**The course** for which I am enrolled in/wish to enrol in and for which the scholarship will be used: \_\_\_\_\_ (provide details including cost of the course/subject and union fees).

I have/have not received financial assistance to undertake studies from any fund/institution or please detail:

\_\_\_\_\_

The information given in this application is accurate.

Signed: \_\_\_\_\_ Date: \_\_\_\_\_

**Attach a letter to accompany this application form outline the personal and professional benefit of your chosen course/subject and the benefit to the Japanese teaching community.**

Application forms and accompanying letter must be returned **by mail** to Anne de Kretser :

Melbourne Centre for Japanese Language Education

Building 54, Monash University, Vic. 3800

Tel (03) 9905 2313 Fax (03) 9905 3874

Email : [Anne.DeKretser@arts.monash.edu.au](mailto:Anne.DeKretser@arts.monash.edu.au)

MCJLE Office Use Only		
Authorised Signature		
_____		
Amount	_____	
\$	_____	
Date	/	/

# Melbourne Centre for Japanese Language Education

## Country & Interstate PD Travel Grant Application Form

The Melbourne Centre for Japanese Language Education recognizes that country and interstate teachers are often prohibited from attending seminars/conference in Melbourne due to the cost of travelling. We are pleased, therefore, to offer teachers travel grants to assist with these costs.

Travel grant applications are carefully considered; teachers will be advised in writing as to the success/not, of their application. Grants will be forwarded to teachers after attendance at their chosen conference/seminar.

Applications must be received at least 4 weeks prior to the conference/seminar you are attending.

Please complete all sections of the following application form.

Name Mr/Mrs/Ms \_\_\_\_\_

School \_\_\_\_\_

School Address \_\_\_\_\_

Post Code \_\_\_\_\_

Tel \_\_\_\_\_ Fax \_\_\_\_\_

E-mail \_\_\_\_\_

Number of kilometres (one way) from your School to Conference or Seminar; \_\_\_\_\_ Km

\*Are you attending the conference or PD with a colleague? Yes  No

If YES: Whose car will be used for travel to the conference or PD.

Mode of travel \_\_\_\_\_

I wish to receive a travel grant to assist me with costs to attend:

Conference \_\_\_\_\_

Venue \_\_\_\_\_

Organized by \_\_\_\_\_

Date \_\_\_\_\_

I am a full time teacher  I am a part time teacher

I teach at \_\_\_\_\_ level. I have been teaching Japanese for \_\_\_\_\_ years.

Have you ever received a travel grant from the MCJLE? Yes  No

If Yes, please detail when and for which conference.

When \_\_\_\_\_, Conference \_\_\_\_\_

Are you receiving any financial assistance from another source/  
institution to attend this conference? Yes  No

Please return this application form by fax to :

Anne de Kretser Fax 03 9905 3874

MCJLE Office Use Only	
Authorised Signature	
_____	
Amount	
Date	/ /

# Melbourne Centre for Japanese Language Education

## REALIA BOX

### Teacher Borrowing Form

(Victoria Only)

Box No.

Details of each box on our website

<http://www.arts.monash.edu.au/affiliates/mcjle/realia-boxes/index.html>

Title:

Name Mr/Mrs/Ms \_\_\_\_\_

School \_\_\_\_\_

Address: \_\_\_\_\_

\_\_\_\_\_ Post Code \_\_\_\_\_

Tel: \_\_\_\_\_ Tel (Home/Mobile) : \_\_\_\_\_

Fax: \_\_\_\_\_ Email: \_\_\_\_\_

Deposit (\$50 per box) :  Paid  Reimbursed

Box borrowed for \_\_\_\_\_ weeks

Date borrowed \_\_\_\_\_, Date to be returned \_\_\_\_\_

I \_\_\_\_\_ of \_\_\_\_\_ (school) understand that my \$50 deposit will only be returned in full on the return of all borrowed items in

MCJLE Authorised Signature \_\_\_\_\_

Date \_\_\_\_\_

Complete the application form and return by fax .

Anne deKretser

Melbourne Centre for Japanese Language Education

Tel (03) 9905 2313/(03) 9905 9478

Fax (03) 9905 3874

# Melbourne Centre for Japanese Language Education

## M CJLE Resources Purchase Form

School Name \_\_\_\_\_

Address \_\_\_\_\_

\_\_\_\_\_ Post Code \_\_\_\_\_

Tel \_\_\_\_\_ Fax \_\_\_\_\_

E-mail \_\_\_\_\_

Name of teacher applying Mr/Mrs/Ms \_\_\_\_\_

Listening Tasks for Senior school Students of Japanese

AUD\$44.00 (GST included)

らくら M CJLE CD-Rom Audio Databank for Senior Students of Japanese

AUD\$44.00 (GST included)

Year 10 Listening material (高校1年生)

AUD\$27.50 (GST included)

Writing Rules!! A Text Type Guide for Senior Secondary Students

How many copies? (Writing Rules!!) \_\_\_\_\_ AUD\$6.60 (GST included)

Kitto Kaiwa Sura Sura Kit

AUD\$55.00(GST included)

TOTAL AMOUNT \$ \_\_\_\_\_

Payment Option  Cheque  Credit Card  Request Tax Invoice \*ABN No. \_\_\_\_\_

Please send the cheque payable to **MONASH UNIVERSITY.**

Credit Card Type  Visa  Master

Card No.

Expiry Date:        /

Card Holder's Name \_\_\_\_\_

Card Holder's Signature \_\_\_\_\_

**Complete the application form and return by fax or mail to MCJLE.**

Anne de Kretser

Fax 03 9905 3874

Melbourne Centre for Japanese Language Education

Building 54, Japanese Studies Centre

Monash University, Victoria 3800 Australia ABN 12 377 614 012

MCJLE Office Use Only		
Shipped	/	/
Payment	/	/

# Melbourne Centre for Japanese Language Education

## MCJLE Resource Collection Borrowing Card Application Form (Victoria only)

School \_\_\_\_\_

Primary

Secondary

Address \_\_\_\_\_

Post Code \_\_\_\_\_

Tel \_\_\_\_\_

Fax \_\_\_\_\_

E-mail \_\_\_\_\_

Name of teacher applying Mr/Mrs/Ms \_\_\_\_\_

Name(s) of other Japanese Teaching staff

Your Levels at which Japanese is taught : PLEASE INDICATE THE NUMBER OF STUDENTS  
taught at each level

Prep	One	Two	Three	Four	Five	Six	Seven	Eight	Nine	Ten	Eleven	Twelve

Total number of students studying Japanese \_\_\_\_\_

Estimated need to visit the Resource Centre

Weekly

Monthly

Fortnightly

Other

**Please return this application from by fax to**

Anne de Kretser

Melbourne Centre for Japanese Language Education

Tel (03) 9905 2313/(03) 9905 9478

Fax (03) 9905 3874

# Melbourne Centre for Japanese Language Education

## MCJLE Resource Collection Postal Borrowing Service

School \_\_\_\_\_ (Mandatory)

Primary

Secondary

Address \_\_\_\_\_ (Mandatory)

\_\_\_\_\_ Post Code \_\_\_\_\_

Tel \_\_\_\_\_ (Mandatory) Fax \_\_\_\_\_

E-mail \_\_\_\_\_ (Mandatory)

Name of teacher applying Mr/Mrs/Ms \_\_\_\_\_ (Mandatory)

Name (Books/DVDs)	Call Number

**The form to the MCJLE by Thursday 6pm**

**Post the items on Mondays**

Please return this application from by fax to  
 Anne de Kretser  
 Melbourne Centre for Japanese Language Education  
 Tel (03) 9905 2313/(03) 9905 9478  
 Fax (03) 9905 3874

MCJEL Office Use Only	
Fax received / /	Requested to M.L / /
Posted / /	Returned / /