



## M CJLE NEWS

### Director's Message

May 2011

Dear Sensei-gata,

I hope you have all had a relaxing break over Easter.

The past term has been very challenging as we all deal with our grief at what has happened in Japan. While we watched the tragedy unfold we could only feel for everyone we know in Japan who has been affected either directly or indirectly. In particular I know we are all thinking about the teachers here who have family and friends in the affected areas and who feel the distance even more at this time.

After the initial shock, it was very so wonderful to see how quickly teachers, schools and students responded, fundraising and donating money to assist alleviate the suffering Japanese people. In times when we feel so helpless being able to do something even from this far away has been comforting and an important part of coping with our reaction to the situation. I feel very proud to be part of such a compassionate and proactive group of professionals.

In this edition of the newsletter we have included some links to materials you may like to use in class. Some are teaching materials others are songs recorded about the tragedy and the hope we must have about the future. I hope you find them both useful and helpful.

Anne de Kretser



### Inside this issue:

Bridge to Japan	2-3
Feel for Japan	4
New Japanese learning Website	4
AISJ Scholarship	4
Interesting Video clip	4
M CJLE Resource Collection Borrowing	5
M CJLE Resource Collection Borrowing Postal Service	5
Join our WIKI	6
Study/Travel grant	7
Using Nihongo Victoria	7
Japanese Festivals	8-9
<b>Japan Festival 2011</b>	<b>9</b>
Professional Development 2011	10-11
Forms	12-23

### M CJLE Contacts

Anne de Kretser, Director  
Monday, Tuesday and Thursday  
Tel : 03 9905 2313 Fax 03 9905 3874  
[anne.dekretser@monash.edu](mailto:anne.dekretser@monash.edu)

Hiroko Liu, Administrative Assistant  
Monday, Thursday and Friday  
9:00am to 2:30pm Tel : 03 9905 9478  
[hiroko.liu@monash.edu](mailto:hiroko.liu@monash.edu) or [arts-mcjl@monash.edu](mailto:arts-mcjl@monash.edu)

## **“Bridge to Japan: whole school language and cultural learning using technology to extend beyond the walls of the language classroom.”**

### **Immanuel Primary School, SA**

Mrs. Shoko McInerney, Head of Japanese, started the Immanuel Primary School Japanese program in 1989, as one of the first Reception to Year 7 compulsory primary programs in South Australia. In 2005, Shoko was awarded *The Endeavour Language Teacher Fellowships*, Australian Government initiatives for language teachers, for a 3 week in-country study tour. On this study tour, Shoko was introduced to Nunose Elementary School, Osaka, an ICT focused local government school in Japan, to establish communication using video conferencing. Since then, students of Immanuel Primary and Nunose have been connecting with annual video conferences to maintain our friendship.

In the meantime, as a result of a strategic planning exercise beginning in 2000, Immanuel Primary School gained authorisation as an International Baccalaureate World School in 2004.

The aim of all IB programs is to develop internationally-minded people who, recognizing their common humanity and shared guardianship of the planet, help to create a better and more peaceful world.

Through the “Becoming Asia Literate: Grants to Schools” national program, Immanuel Primary School received \$20,000 to fund a unique technology-rich program bringing Japanese language and culture learning to life in all Immanuel Primary School classrooms.

The overall objective of the project, as with the IB, is to promote international-mindedness. The grant enabled the launch of a new project dubbed “Bridge to Japan”.

The ICT Coordinator, Mrs. Christine Haynes, recently recognised as an Apple Distinguished Educator, works collaboratively with Shoko and each Year Level teaching team, to target how specific learning needs can be met in ways that are enhanced through technology resulting in innovative approaches to learning.

The “Bridge to Japan” project, along with established school connections with Nunose Elementary, enables the school to enhance and broaden the study of Japanese language and culture within and beyond the Japanese classroom, supported by a long term vision of seamless learning with technology to promote international-mindedness school-wide.

Creative and flexible use of 15 iPads allows every student to address rich language and cultural resources for opportunity to use the iPads extensively both in the Japanese centre and in the classroom. Corresponding to the integrated unit of inquiry time, students will have frequent access to the iPads for ad-hoc small group, paired and individual use.

The iPads allow access to rich multimedia resources including images, audio recordings, Japanese language applications and website links. Students find the technology easy to use and very motivating. Rich resources are accessed from our whole school virtual learning environment called “The Hub”.

Teachers find appropriate and relevant links, and students access them, from The Hub, with the help of the grant funding.

Shoko also locates and creates authentic language resources which can be accessed from The Hub, in all classrooms, all year long.

The grant also enables further development of relationships with Nunose Elementary School, as well as acquiring authentic learning resources across the year levels.

To officially launch the project, the schools are coordinating a joint whole-school video conference with Nunose Elementary in early May.

Shoko McInerney - Head of Japanese, Project Leader

Christine Haynes - ICT Coordinator, Deputy Project Leader

What's new?  
平成22年 11月11日におこな  
われました。  
「松原第三中学校区委 人権教育総合  
推進地域事業」研究発表大会に ご参  
加ありがとうございました。

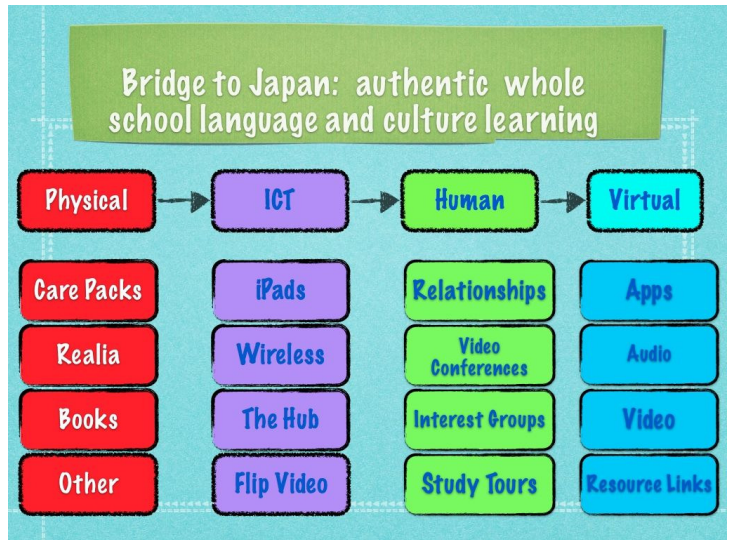
Welcome to  
Nunose  
elementary  
school

ようこそ!  
めのしょうへ

学年  
ページ 1 2 3 4 5 6

学校について    めのしょうNEWS    学校の取り組み

教育紹介/学びのスタイル など    特色あるとりくみなど    共同学習/学校間交流 など



## Feel for Japan

New 20 Ways to Teach About the Disaster in Japan Across the Curriculum

This online resource developed by the New York Times newspaper aims to build student understandings of the damage and effects of severe earthquakes and tsunamis, with a focus on Japan. It includes extracts of articles, summaries, images, videos and activities, including the causes of earthquakes and tsunamis; the recent earthquake's epicentre and impact using maps of Asia; life for survivors in the days following the disaster; and the nuclear power debate. To view the classroom resources go to: <http://learning.blogs.nytimes.com/2011/03/15/20-ways-to-teach-about-the-disaster-in-japan-across-the-curriculum/>

Fukushima song

<http://en.rocketnews24.com/2011/04/09/i-love-you-i-need-you-fukushima-famous-japanese-musicians-and-actors-create-music-video-beautiful-tribute-to-japans-solidarity/>

TOMOSHIBI

<http://www.youtube.com/watch?v=CQ2Qh6LvnFc>

Japanese version

<http://www.youtube.com/watch?v=RgbFaTQj3l8&feature=related>

English version

## New (and FREE!) Japanese Language Learning Website from the Japan Foundation

The Japan Foundation has recently opened to the public its free Japanese language study website at [www.erin.ne.jp](http://www.erin.ne.jp). The website includes interactive lessons, videos, images, games and more!

A fantastic resource for teachers, parents and students of all ages, through this website you'll be able to say "I can speak Japanese!"

## Scholarship offered by the Australia-Japan Society of Victoria

Please see details of criteria on page 20 and 21 and the application form on page 22 and 23.



## Interesting Video Clip

This Japanese Beer commercial is incredibly detailed.

[http://www.youtube.com/watch\\_popup?v=K-Rs6YEZA+8](http://www.youtube.com/watch_popup?v=K-Rs6YEZA+8)

# **MCJLE Resource Collection Borrowing Postal Service**

## **\*For Interstate/Country/Outer Metropolitan Melbourne Teachers**

The MCJLE Resource Collection is available to all schools. The collection is quite substantial in size and so we can support the inclusion of interstate (SA & TAS) schools and country schools through a postal service.

Schools in Melbourne are also be able to use the service.

The collection which is managed by the Asian Studies Research Library staff and in particular, the Japanese librarian, Ms. Ayako Hatta, work cooperatively with the MCJLE to collectively borrow and post out materials to schools.

Teachers can use the online catalogue to decide which materials they wish to borrow.

The selected materials (if available) will be packaged and sent to schools for a two week borrowing period.

The cost of postage to the school will be borne by the MCJLE the return post must be paid for by the borrowing school. Teachers are able to borrow, flashcards, printed and multi-media materials. Big books and posters cannot be borrowed. Teachers may only borrow 8 items at a time.

### **How it works??**

1. Teachers look at the on-line catalogue
2. Teachers choose items relevant for their purpose
3. Teachers write the name of the item and call number on the borrowing form [see page 19 ]
4. Teachers fax the borrowing form to the MCJLE by Thursday 6pm
5. MCJLE processes all requests and forward to the Asian Studies Research Library for processing
6. MCJLE picks up and post the items on Mondays
7. Borrowing period is three weeks
8. Teachers post the items back to the MCJLE
9. MCJLE return the items to the library

This is a free service HOWEVER any items that are overdue will incur a cost which must be borne by the teacher.



### **How to find Materials**

1. Go to <http://library.monash.edu.au/>
2. Type "MCJLE" in the search box  
(You will find resources held in the MCJLE Collection)
3. Follow the prompts for searching using the catalogue you may only borrow items in the MCJLE Resource Collection.

### **\* Maximum 8 items**

We hope that you find this service useful and convenient.

We look forward to your feedback regarding it.



# Join our Wiki!!!! M CJLE Benrichou

Available to all teachers of Japanese.

The Melbourne Centre for Japanese Language Education has established a Wiki for teachers of Japanese. The Wiki is maintained by the M CJLE for teachers and the information placed there is checked for its appropriateness and relevance.

Information can be placed on the Wiki by teachers for the purpose of sharing with other teachers.

The M CJLE benrichou is designed to complement the Nihongo Victoria E-mail group. It is for posting information useful to others for an extended length of time NOT for asking questions or advertising upcoming events, please continue to use NVEG for that.

## What, Why, Who, How is Wiki

### What?

A Wiki is a secure, managed, space on the internet where members of that Wiki can share information on certain subjects. The tool used is workspaces for teachers.

### Why?

Many teachers find and want to share useful websites, information and teaching activities, ideas and strategies. A Wiki is a convenient place to post and store that information electronically in an organised manner. Members can easily access information and or post information for other teachers to access.

### Who?

Any teacher of Japanese who would like to become a member. Registration is essential and teachers must provide their name, school and their chosen user name before they will be given permission to access the M CJLE Wiki.

## How? THIS IS A FREE SERVICE [Step by step Guide]

1. Teachers get onto the wikispaces for teachers page and register  
<http://www.wikispaces.com/site/for/teachers>
2. Teachers send an e-mail requesting an invitation to join the **M CJLE benrichou** Wiki, to the Melbourne Centre for Japanese Language Education with the following information:
  - Name
  - School
  - Preferred e-mail address
  - User nameSend the e-mail to [mcjle@arts.monash.edu.au](mailto:mcjle@arts.monash.edu.au)
3. The M CJLE will then send an invitation through wikispaces for you to join our specific Wiki.
4. You will be notified by wikispaces when the invitation has been issued.
5. Start using the M CJLE benrichou WIKI
6. Let us know if there is anything we can do to improve our wiki or if you would like more pages [topics] added



## Study Grant/Travel Grant



### Study Grant

All qualified teachers of Japanese in Victoria, South Australia and Tasmania are invited to apply for a study grant to assist with the cost of undertaking post graduate studies related to the teaching of Japanese. The MCJLE offers grants of up to \$1,000 per semester to teachers wishing to further their studies.

All interested teachers should complete the application form on page 14 of this newsletter and send or fax it to the MCJLE.

### Travel Grant

Teachers of Japanese in Victoria, South Australia and Tasmania are invited to apply for travel grants to ASSIST them with the cost of travelling to seminars or conferences within their own state or interstate. Interested teachers should complete the application form on page 16 and post or fax it to the MCJLE.

Teachers, please be advised that payment can only be made after documentation verifying attendance at the nominated conference or seminar is received by our office.

## Using Nihongo Victoria E-mail

ALL teachers of Japanese are welcome to join the NVEG. This group is designed to keep teachers networked and provide a system by which they can exchange useful information about the teaching and learning of Japanese language, resources, websites, curriculum and extra curricular activities.

**To ensure that the NVEG is as useful and efficient as possible please avoid posting personal messages on-line and avoid having conversations on-line.**

Used properly the NVEG is a useful tool but before hitting 'reply to all' consider whether 'all' need to read the e-mail. This way we avoid in-box over load of e-mails that are not relevant to everyone.

**If you wish to join the Nihongo Victoria E-mail Group please provide us with the following details .**

A) If you are currently teaching Japanese at a school or institution in Australia and you will be using your school email address (eg. [yyyy.zzzz@edumail.vic.gov.au](mailto:yyyy.zzzz@edumail.vic.gov.au) ), send an email message from that email account to [arts-mcjle@monash.edu](mailto:arts-mcjle@monash.edu).

B) If you are currently teaching Japanese at a school or institution in Australia and you will be using a personal email address (eg. [yyyy.zzzz@yahoo.com](mailto:yyyy.zzzz@yahoo.com) etc. ), send an email message from that email account to [arts-mcjle@monash.edu](mailto:arts-mcjle@monash.edu).

Please provide

- your name
- your school/institution name
- your school/institution phone number to avoid spam messages to the list)

C) If you are not currently employed at a school or an institution in Australia, you need a referee who is currently teaching Japanese at a school or institution. Send an email message from your preferred email account to [arts-mcjle@monash.edu](mailto:arts-mcjle@monash.edu).

# Japanese Festivals 日本の祭

## Constitution Memorial Day 憲法記念日

The Constitution of Japan came into force on May 3, 1947. To commemorate this event, the date is celebrated as a national holiday.

Unlike the Meiji Constitution that it replaced, the present Constitution declares that sovereignty lies with the people; the Emperor is "the symbol of the state and the unity of the people" who has no "powers related to government." It asserts that people have fundamental human rights and renounces war.

It is a very democratic document modeled on the American and British constitutions.

<http://web-japan.org/kidsweb/explore/calendar/may/constitution.html>

## Greenery Day みどりの日

Greenery Day is celebrated on May 4. This is a day that has been set aside for nature appreciation. Until 1988, April 29 was celebrated as the birthday of Emperor Showa. It was decided to keep this day a holiday even after his passing away in January 1989 and to name it Greenery Day because of the late Emperor's love of nature. In 2007, April 29 became Showa Day, and Greenery Day was moved to May 4.

On this day, commemorative plantings of trees are held around the country, as are many events that bring people closer to nature.

<http://web-japan.org/kidsweb/explore/calendar/may/greeneryday.html>

## Children's Day こどもの日



May 5 is Children's Day, when families celebrate the healthy growth and happiness of children. It became a national holiday in 1948, but it has been a day of celebration in Japan since ancient times.

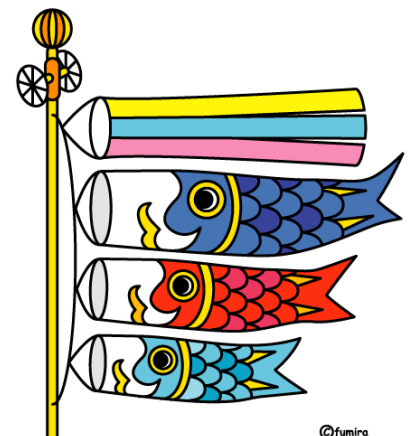
The fifth day of the fifth month was traditionally called Tango no Sekku and was a festival for boys. Girls have their own festival, called Hina Matsuri (Doll Festival), held on the third day of the third month.

On Children's Day, families with boys fly huge carp-shaped streamers (*koinobori*) outside the house and display dolls of famous warriors and other heroes inside. The carp was chosen because it symbolizes strength and success; according to a Chinese legend, a carp swam up-stream to become a dragon.

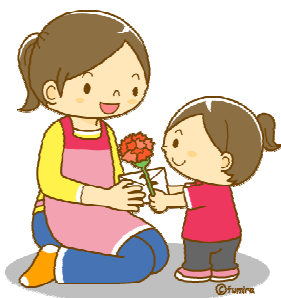
In recent years, as more people have moved into apartments and smaller houses, the carp streamers have also gotten smaller, and there are now miniature versions that are decorated indoors.

Also on this day, families often take baths sprinkled with iris leaves and roots. This is because the iris is thought to promote good health and ward off evil. Rice cakes wrapped in oak leaves and filled with sweet bean paste, called *kashiwamochi*, are also eaten.

<http://web-japan.org/kidsweb/explore/calendar/may/children.html>



## Mother's Day 母の日



The second Sunday in May is Mother's Day. On this day, people give carnations as a way of saying "thank you" to their mothers, who raised them with loving care. Mother's Day originated in the United States, but it's spread to countries around the world, so you're probably familiar with it.

In Japan it was first observed by Christians starting around 1913, and by the 1930s large gatherings were being held to celebrate Mother's Day. The practice was halted during World War II, when Western customs were prohibited, but it was revived after the war, partly as a means of consoling the women and children who lost their husbands and fathers in the war. By 1949 the practice had spread to all parts of the country. <http://web-japan.org/kidsweb/explore/calendar/may/mom.html>

## Japan Festival 2011 at Box Hill Town Hall & Box Hill

The Japan Festival, which was first held in year 2000, has continued to be successful and we are proud that it marks its 12th year this year. The festival has provided the opportunity to exchange cultural experiences for not only the Japanese community here, but also for the local community. The festival, with a rich variety of exhibits and stalls, has attracted all ages. It also has earned its status as the biggest Japan-related event in Australia. We are pleased to announce the JF2011 outline as below.

**Date & Time:** Sunday 15th May 2011 10:00 AM ~ 5:00 PM

**Venue:** Box Hill Town Hall & Box Hill TAFE, 1000-1022 Whitehorse Road, Box Hill

**Entry Fee:** \$5.00

**Free entry:** Children (up to Grade 6), Pensioners, Senior Citizens, Disabled persons (+ 1 attendant), & Persons dressed in Kimono or Yukata

**Organisers:** Japan Club of Victoria

**Aims:** Japan Festival aims to assist cultural exchange between Australia and Japan.

We also aim to provide a vibrant festival everybody can enjoy.

**Supporters:** Japanese Chamber of Commerce & Industry Melbourne, Japanese Society of Melbourne, Australia-Japan Society of Victoria, Japanese Studies Centre (Monash University)

Victorian Multicultural Commission

**Performances:** Taiko Drums, Japanese Dances, Kendo, Karate, Shakuhachi, Tsugaru-jamisen, Kimono Contest, Cosplay Contest, Singing Competition, Trivia Quiz Show, etc.

**Special Event:** Cosplay Contest

**Displays:** Bullet train (Shinkansen) Model Rail, Ikebana, Bonsai, etc.

**Demonstrations:** Tea Ceremony, Go, Origami, Traditional Japanese Games, etc

**Stalls:** About 110 Stalls expected

Sushi, Takoyaki, Yakitori, Fairy Floss, Japanese Cakes, Tea, Japanese Toys, China, Books, Craft, Kimono, Yoyo game, and lots more.

**Raffle:** Gorgeous prizes

# Professional Development 2011

## 4 Day Seminar series for First time teachers of Year 11 and 12 Japanese Second Language (\*Application form is on page 12)

This seminar series is designed to help teachers navigate through teaching VCE for the first time. Teachers may attend one, some or all seminars but it is recommended that if possible all seminars are attended.

The seminars will explain:

the VCE course and assessment requirements

focus on the skills required by students

workshop writing outcomes and SACs

develop strategies for preparing students for examinations

Dates:

[Teachers are welcome to attend both the Year 11 and Year 12 sessions or just those relevant to them in 2011]

**Day3: Monday 27<sup>th</sup> June 2011 (Ref No. JUN2711)**

Year 11 & 12 : 9.30 - 12.30

Developing reading, writing, listening and speaking skills

Year 11 & 12 : 1.30 - 4.30

What, when and how...The detailed study

**Day 4: Thursday 25<sup>th</sup> August 2011 (Ref No. AUG2511)Year 12 : 9.30 - 3.30**

Year 12 examination technique....How to prepare students for the examinations

**Provided : Parking Permit and lunch**

## Year 12 Japanese Second Language Examination 2010: Review (\*Application form is on page 13)

This seminar will review Year 12 Second Language Japanese Examination in 2010 and explore elements of the course in which students are doing well and those that need improvement. There will be time for teachers to discuss issues and ask questions.

The workshop will be conducted by Ms. Junko Glynn.

**Date : Monday, 20<sup>th</sup> June 2011**

**Time : 1pm to 4pm**

**Cost : \$20 (GST inc.)**

**Closing Date : 6<sup>th</sup> June 2011**

**Provided : Parking Permit and refreshment**

# Professional Development Calendar May to Nov. 2011



Title	Ref. No.	Date	Time	Suitable for	Cost	Closing Date
<b>June 2011</b>						
Year 12 Japanese Second Language Examination 2010 : Review	JUN2011	Mon 20th	1pm -4pm	All interested teachers	\$20.00	6th June 2010
First time teacher of Year 11 and 12 Japanese	JUN2711	Mon 27th	9:30am-4:30pm	First time teachers of Year 11 & 12	\$27.50	10th June 2011
<b>August 2011</b>						
First time teacher of Year 11 and 12 Japanese	AUG2511	Thu 25th	9:30am-3:30pm	First time teachers of Year 11 & 12	\$27.50	12th August 2011

The Melbourne Centre for Japanese Language Education is funded by an endowment from the Nippon Foundation with the overall program administered by the Tokyo Foundation

# Melbourne Centre for Japanese Language Education

## Professional Development Registration Form

### First Time Teacher of Year 11 and 12 Japanese Second Language

Reference No.	Amount	Date	Closing Date	Apply
APR0711	\$27.50	07/04/2011	21/03/2011	<input type="checkbox"/>
AUG2511	\$27.50	25/08/2011	08/08/2011	<input type="checkbox"/>

Name \_\_\_\_\_

School \_\_\_\_\_

School Address \_\_\_\_\_

Post Code \_\_\_\_\_

Tel \_\_\_\_\_ Fax \_\_\_\_\_

E-mail (mandatory) \_\_\_\_\_

Dietary requirement \_\_\_\_\_

Parking Permit Request  Yes  No

Payment Option  Cheque (Please send a cheque prior to seminar)  Credit Card

Request Tax Invoice to school ABN No. \_\_\_\_\_

Please send the cheque payable to **MONASH UNIVERSITY**.

Credit Card Type  Visa  Master Expiry Date: /

Card No.

Card Holder's Name \_\_\_\_\_

Card Holder's Signature \_\_\_\_\_

**Complete the application form and return by fax or mail to MCJLE.**

Melbourne Centre for Japanese Language Education

Building 54, Monash University Victoria 3800 Australia

Tel (03) 9905 2313 Fax (03) 9905 3874 ABN 12 377 614 012

# Melbourne Centre for Japanese Language Education

## Professional Development Registration Form

### Year 12 Japanese Second Language Examination 2010: Review

Reference No.	Amount	Date	Closing Date	Apply
JUN2011	\$20.00	20/06/2011	06/06/2011	<input type="checkbox"/>

Name \_\_\_\_\_

School \_\_\_\_\_

School Address \_\_\_\_\_

Post Code \_\_\_\_\_

Tel \_\_\_\_\_ Fax \_\_\_\_\_

E-mail (mandatory) \_\_\_\_\_

Dietary requirement \_\_\_\_\_

Parking Permit Request  Yes  No

Payment Option  Cheque (Please send a cheque prior to seminar)  Credit Card

Request Tax Invoice to school ABN No. \_\_\_\_\_

Please send the cheque payable to **MONASH UNIVERSITY**.

Credit Card Type  Visa  Master Expiry Date: /

Card No.

Card Holder's Name \_\_\_\_\_

Card Holder's Signature \_\_\_\_\_

**Complete the application form and return by fax or mail to MCJLE.**

Melbourne Centre for Japanese Language Education

Building 54, Monash University Victoria 3800 Australia

Tel (03) 9905 2313 Fax (03) 9905 3874 ABN 12 377 614 012

# Melbourne Centre for Japanese Language Education

## Study Grant Application Form

Name Mr/Mrs/Ms \_\_\_\_\_

Address \_\_\_\_\_

\_\_\_\_\_ Post Code \_\_\_\_\_

Home/Mobile Telephone number \_\_\_\_\_

School \_\_\_\_\_

Tel \_\_\_\_\_ Fax \_\_\_\_\_

E-mail \_\_\_\_\_

I have been teaching Japanese for \_\_\_\_\_ years (including 2010)

I am currently teaching at the following year levels \_\_\_\_\_

### TERTIARY QUALIFICATIONS (Please give details of institution, year of study and results)

You may include a copy of your academic record for this section. Also detail any additional courses you have completed. Clearly state whether or not you have a **major** in Japanese

**The course** for which I am enrolled in/wish to enrol in and for which the scholarship will be used: \_\_\_\_\_ (provide details including cost of the course/subject and union fees).

I have/have not received financial assistance to undertake studies from any fund/institution or please detail:

\_\_\_\_\_

The information given in this application is accurate.

Signed: \_\_\_\_\_ Date: \_\_\_\_\_

**Attach a letter to accompany this application form outline the personal and professional benefit of your chosen course/subject and the benefit to the Japanese teaching community.**

Application forms and accompanying letter must be returned **by mail** to Anne de Kretser :

Melbourne Centre for Japanese Language Education

Building 54, Monash University, Vic. 3800

Tel (03) 9905 2313 Fax (03) 9905 3874

Email : [Anne.DeKretser@arts.monash.edu.au](mailto:Anne.DeKretser@arts.monash.edu.au)

MCJLE Office Use Only		
Authorised Signature		
_____		
Amount	_____	
\$	_____	
Date	/	/

# Melbourne Centre for Japanese Language Education

## Country & Interstate PD Travel Grant Application Form

The Melbourne Centre for Japanese Language Education recognizes that country and interstate teachers are often prohibited from attending seminars/conference in Melbourne due to the cost of travelling. We are pleased, therefore, to offer teachers travel grants to assist with these costs.

Travel grant applications are carefully considered; teachers will be advised in writing as to the success/not, of their application. Grants will be forwarded to teachers after attendance at their chosen conference/seminar.

Applications must be received at least 4 weeks prior to the conference/seminar you are attending.

Please complete all sections of the following application form.

Name Mr/Mrs/Ms \_\_\_\_\_

School \_\_\_\_\_

School Address \_\_\_\_\_

Post Code \_\_\_\_\_

Tel \_\_\_\_\_ Fax \_\_\_\_\_

E-mail \_\_\_\_\_

Number of kilometres (one way) from your School to Conference or Seminar; \_\_\_\_\_ Km

Mode of travel \_\_\_\_\_

I wish to receive a travel grant to assist me with costs to attend:

Conference \_\_\_\_\_

Venue \_\_\_\_\_

Organized by \_\_\_\_\_

Date \_\_\_\_\_

I am a full time teacher

I am a part time teacher

I teach at \_\_\_\_\_ level. I have been teaching Japanese for \_\_\_\_\_ years.

Have you ever received a travel grant from the MCJLE? Yes  No

If **Yes**, please detail when and for which conference.

When \_\_\_\_\_, Conference \_\_\_\_\_

Are you receiving any financial assistance from another source/  
institution to attend this conference? Yes  No

Please return this application form by fax to ;

Anne de Kretser Fax 03 9905 3874

Melbourne Centre for Japanese Language Education

MCJLE Office Use Only	
Authorised Signature	
_____	
Amount	
\$	_____
Date	/ /

# Melbourne Centre for Japanese Language Education

## REALIA BOX

### Teacher Borrowing Form

(Victoria Only)

Box No.

Details of each box on our website

<http://www.arts.monash.edu.au/affiliates/mcjle/realia-boxes/index.html>

Title:

Name Mr/Mrs/Ms \_\_\_\_\_

School \_\_\_\_\_

Address: \_\_\_\_\_

\_\_\_\_\_ Post Code \_\_\_\_\_

Tel: \_\_\_\_\_ Tel (Home/Mobile): \_\_\_\_\_

Fax: \_\_\_\_\_ Email: \_\_\_\_\_

Deposit (\$50 per box) :  Paid  Reimbursed

Box borrowed for \_\_\_\_\_ weeks

Date borrowed \_\_\_\_\_, Date to be returned \_\_\_\_\_

I \_\_\_\_\_ of \_\_\_\_\_ (school) understand that my \$50 deposit will only be returned in full on the return of all borrowed items in

MCJLE Authorised Signature \_\_\_\_\_

Date \_\_\_\_\_

Complete the application form and return by fax .

Anne deKretser

Melbourne Centre for Japanese Language Education

Tel (03) 9905 2313/(03) 9905 9478

Fax (03) 9905 3874

# Melbourne Centre for Japanese Language Education

## M CJLE Resources Purchase Form

School Name \_\_\_\_\_

Address \_\_\_\_\_

\_\_\_\_\_ Post Code \_\_\_\_\_

Tel \_\_\_\_\_ Fax \_\_\_\_\_

E-mail \_\_\_\_\_

Name of teacher applying Mr/Mrs/Ms \_\_\_\_\_

Listening Tasks for Senior school Students of Japanese

AUD\$44.00 (GST included)

らくらく MCJLE CD-Rom Audio Databank for Senior Students of Japanese

AUD\$44.00 (GST included)

Year 10 Listening material (高校2年生)

AUD\$27.50 (GST included)

Writing Rules!! A Text Type Guide for Senior Secondary Students

How many copies? (Writing Rules!!) \_\_\_\_\_ AUD\$6.60 (GST included)

Kitto Kaiwa Sura Sura Kit

AUD\$55.00(GST included)

TOTAL AMOUNT \$ \_\_\_\_\_

Payment Option  Cheque  Credit Card  Request Tax Invoice \*ABN No. \_\_\_\_\_

Please send the cheque payable to **MONASH UNIVERSITY.**

Credit Card Type  Visa  Master

Card No.

Expiry Date: \_\_\_\_\_ / \_\_\_\_\_

Card Holder's Name \_\_\_\_\_

Card Holder's Signature \_\_\_\_\_

**Complete the application form and return by fax or mail to MCJLE.**

Anne de Kretser

Fax 03 9905 3874

Melbourne Centre for Japanese Language Education

Building 54, Japanese Studies Centre

Monash University, Victoria 3800 Australia ABN 12 377 614 012

MCJLE Office Use Only		
Shipped	/	/
Payment	/	/

# Melbourne Centre for Japanese Language Education

## MCJLE Resource Collection Borrowing Card Application Form (Victoria only)

School \_\_\_\_\_

Primary

Secondary

Address \_\_\_\_\_

\_\_\_\_\_ Post Code \_\_\_\_\_

Tel \_\_\_\_\_

Fax \_\_\_\_\_

E-mail \_\_\_\_\_

Name of teacher applying Mr/Mrs/Ms \_\_\_\_\_

Name(s) of other Japanese Teaching staff

Your Levels at which Japanese is taught : PLEASE INDICATE THE NUMBER OF STUDENTS  
taught at each level

Prep	One	Two	Three	Four	Five	Six	Seven	Eight	Nine	Ten	Eleven	Twelve

Total number of students studying Japanese \_\_\_\_\_

Estimated need to visit the Resource Centre

Weekly

Monthly

Fortnightly

Other

**Please return this application from by fax to**

Anne de Kretser

Melbourne Centre for Japanese Language Education

Tel (03) 9905 2313/(03) 9905 9478

Fax (03) 9905 3874

# Melbourne Centre for Japanese Language Education

## MCJLE Resource Collection Postal Borrowing Service

School \_\_\_\_\_ (Mandatory)

Primary

Secondary

Address \_\_\_\_\_ (Mandatory)

\_\_\_\_\_ Post Code \_\_\_\_\_

Tel \_\_\_\_\_ (Mandatory) Fax \_\_\_\_\_

E-mail \_\_\_\_\_ (Mandatory)

Name of teacher applying Mr/Mrs/Ms \_\_\_\_\_ (Mandatory)

Name (Books/DVDs)	Call Number

**The form to the MCJLE by Thursday 6pm**

**Post the items on Mondays**

Please return this application from by fax to  
 Anne de Kretser  
 Melbourne Centre for Japanese Language Education  
 Tel (03) 9905 2313/(03) 9905 9478  
 Fax (03) 9905 3874

MCJEL Office Use Only	
Fax received / /	Requested to M.L / /
Posted / /	Returned / /



# Australia-Japan Society of Victoria



## Scholarships offered by the Australia-Japan Society of Victoria

For over 30 years, the Society has organised a most successful reciprocal Scholarship Program with our contacts in Japan.

Last year a decision was made to work with schools teaching Japanese that have their own short term exchange program. As a pilot scheme, a student from Bright P-12 College was awarded a scholarship in 2010. Following the success of this pilot, this year the Society is again planning to identify sponsors for an additional number of students from schools with **an established exchange program**. It is envisaged that the successful students will participate in a program which is wholly organised by the school.

Details of criteria for student selection are as follows.

### CRITERIA

- School must have an existing exchange program.
- Student should be someone whose family could not afford to participate.
- Student must be studying Japanese.
- Student must be in Yr 9, 10 or 11 in 2011.
- Student should have a positive attitude towards studies.
- Student should be a good citizen and a contributor to school life.
- Student should preferably be first time traveller to Japan.

### FURTHER INFORMATION

- Only one student may be recommended from each school.
- Ultimate recommendation comes from school Principal and the Homeroom or Japanese teacher.
- Student will be required to attend an interview.
- Student must be prepared to meet AJS Management Committee members and sponsor upon return to provide feedback. A one page written report is required for publication in AJS newsletter.
- The value of the scholarship will be approximately \$3000.
- The Society's selection is final and no feedback will be given.

## **APPLICATION PROCEDURE**

The following documentation should be submitted together to the Society. Please note that all information received will be kept confidential.

### **From the student:**

- The completed application form which follows
- One page written by the applicant on 'Why I wish to participate in the exchange program'

### **From parents and the student:**

- a letter confirming their understanding of the school's travel guidelines (including overseas travel insurance requirement) and their consent to the student safety and risk management statement required by the Society (A prescribed form for this letter will be provided by the Society.)

### **From the Principal:** A covering letter

- recommending student and identifying that student's family as one that could normally not afford to participate; and
- confirming compliance of the school's overseas travel guidelines with the Victorian Government's travel guidelines and its consent to the student safety and risk management statement required by the Society. (A prescribed form for this letter will be provided by the Society.)

### **From Japanese Teacher**

- A copy of the school's Japanese language program (showing levels taught in school)
- A copy of planned itinerary/details of exchange program (if this is not yet available, then the previous year's program will suffice)

## **DEADLINE:**

All documentation to be received by **Friday 27/5/11** at:

The Australia-Japan Society of Victoria  
Youth Exchange & Scholarships  
Level 2, 99 Queen Street  
Melbourne, VIC 3000



**Australia Japan Society of Victoria  
Youth Exchange and Scholarship  
Scholarship Information 2011**

Late or incomplete applications will not be considered.

*Please fill out this form in black ink and attach it to the front of your application.*

**Name:** \_\_\_\_\_

**Yr Level in 2011:** \_\_\_\_\_

**Are you an Australian Citizen or Permanent Resident of Australia?** YES / NO

**Address:** \_\_\_\_\_  
\_\_\_\_\_

**Telephone:** \_\_\_\_\_

**Email address:** \_\_\_\_\_

**Date of Birth:** \_\_\_\_\_ **Age:** \_\_\_\_\_

**Name of School:** \_\_\_\_\_

**Name of your Principal/Head of School:** \_\_\_\_\_

**Postal address of your school/campus:** \_\_\_\_\_  
\_\_\_\_\_

**Name of your Japanese OR Homeroom Teacher:** \_\_\_\_\_

**Japanese or Homeroom teacher's phone number in business hours:** \_\_\_\_\_



**Father's name & occupation:** \_\_\_\_\_

**Mother's name & occupation:** \_\_\_\_\_

**Number of brothers \_\_\_\_\_ and sisters \_\_\_\_\_ Your place in the family \_\_\_\_\_**

**Do any members of your family have a Japanese-speaking background? YES / NO**

**If yes, please give details:** \_\_\_\_\_

\_\_\_\_\_

**Have you previously visited Japan? YES / NO**

**If yes, please give details (length and nature of your stay, including the year of your visit):**

\_\_\_\_\_

\_\_\_\_\_

**Your hobbies/interests** \_\_\_\_\_

\_\_\_\_\_

\_\_\_\_\_

**Parental Consent:**

I consent to my son/daughter visiting Japan if he/she is successful in winning a scholarship.

**Parent(s)' signature(s):** \_\_\_\_\_

Please attach your one page essay, 'Why I wish to participate in the exchange program'. Please tell us why you wish to visit Japan as an exchange student with your school and why you would be a suitable candidate for a scholarship. Feel free to include any information which you may believe to be relevant.

