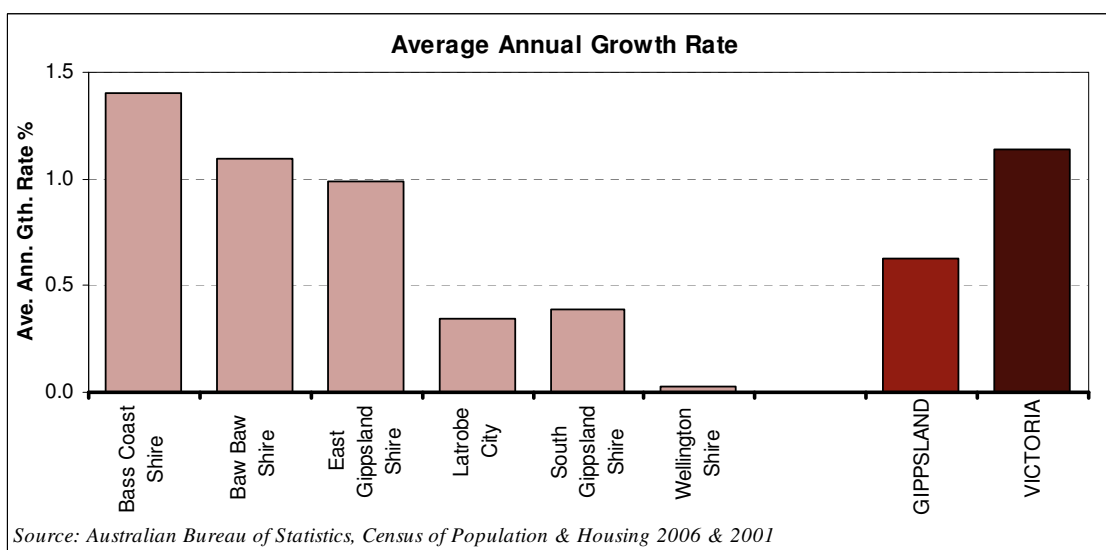


Gippsland Research & Information Service

Gippsland Population - * 2001 & 2006 Census



Area	Km ²	Census Population				Avg. Annual Growth Rate % 2001-2006
		2001 No.	2006 No.	Difference No.	% Change	
Bass Coast Shire	864.6	24 765	26 543	1 778	6.82	1.40
Baw Baw Shire	4 034.60	35 211	37 178	1 967	5.59	1.09
East Gippsland Shire	20 945.70	38 111	40 040	1 929	5.06	0.99
Latrobe City	1 427.10	68 157	69 331	1 174	1.72	0.34
South Gippsland Shire	3 297.70	25 242	25 738	496	1.96	0.39
Wellington Shire	10 995.30	40 023	40 082	59	0.15	0.03
Total Gippsland	41 565.00	231 509	238 912	7 403	3.20	0.63
Victoria	227 844.30	460 991	4 932 422	271 431	5.82	1.14

* Population counts based on 'place of usual residence'
Source: Australian Bureau of Statistics