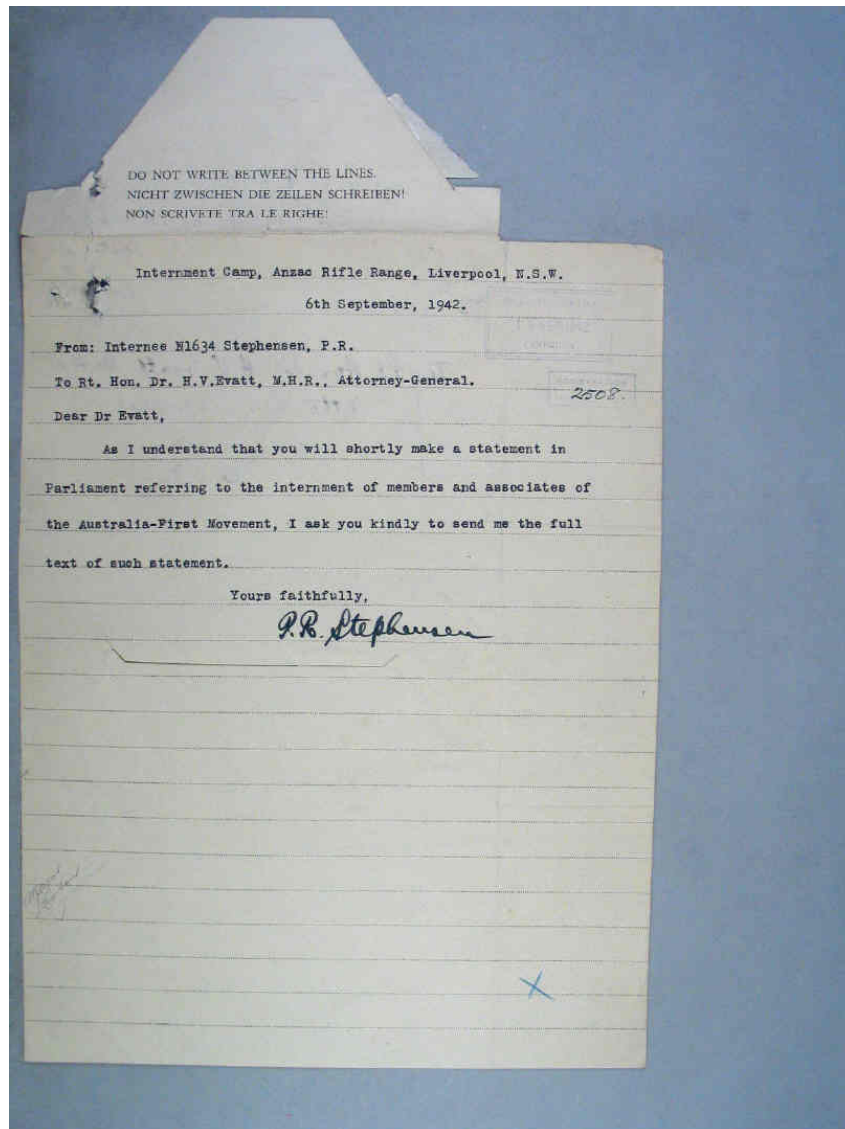
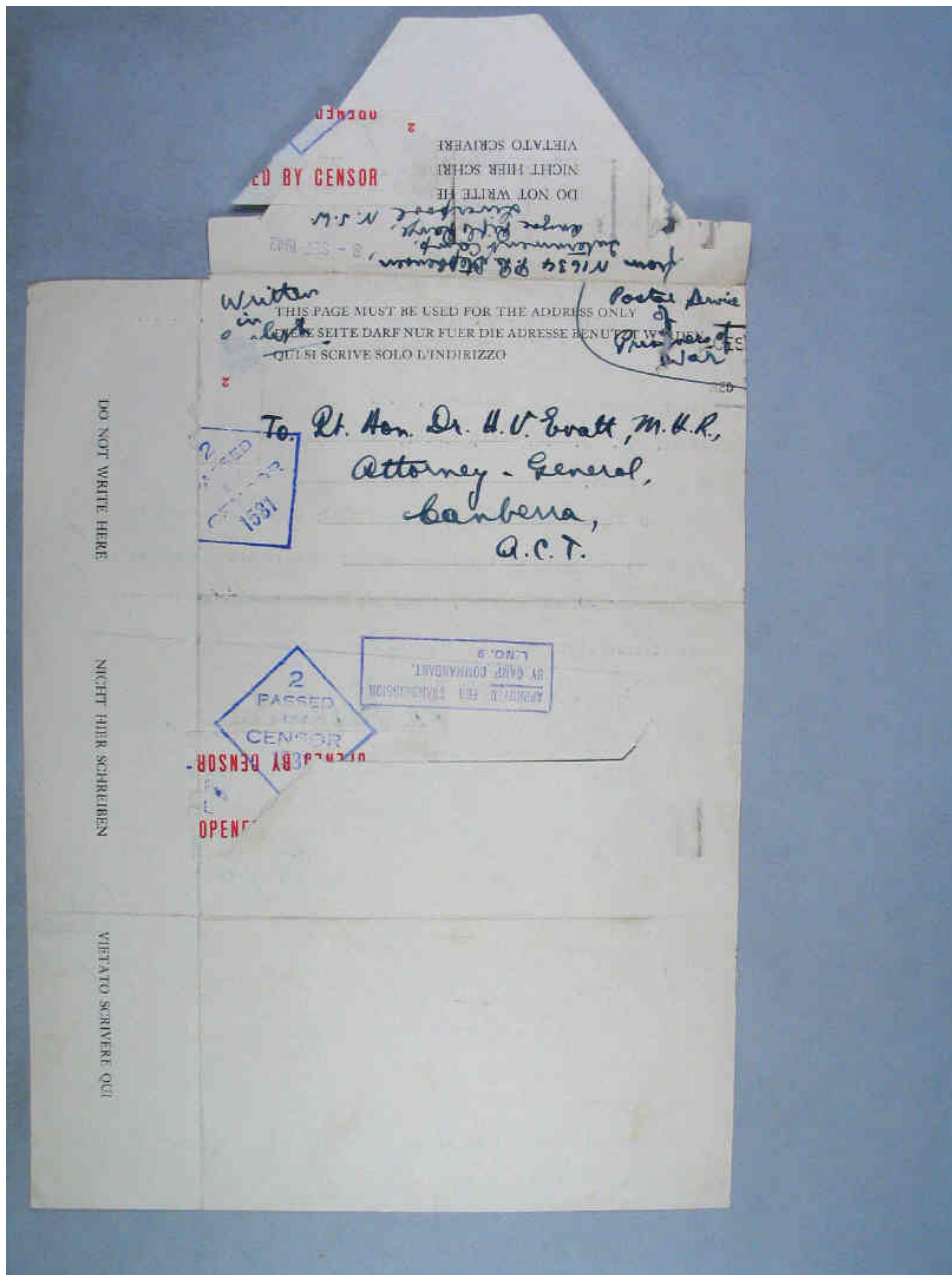


Figure 1:



'Do not write between the lines': An example of an internee lettercard from P.R. Stephensen to Dr. H.V. Evatt, 6 September 1942. By permission of Mrs. Joan Dickson. Image: The National Archives of Australia. A373 4522B.

Figure 2:



The stamps of the Censor, the internee number and address ensured that prying eyes were privy to the stigma attached to the family of an internee. By permission of Mrs. Joan Dickson. Image: The National Archives of Australia A373 4522B.

Figure 3:



Former Rifle Association huts behind the barbed wire of Liverpool Internment Camp.

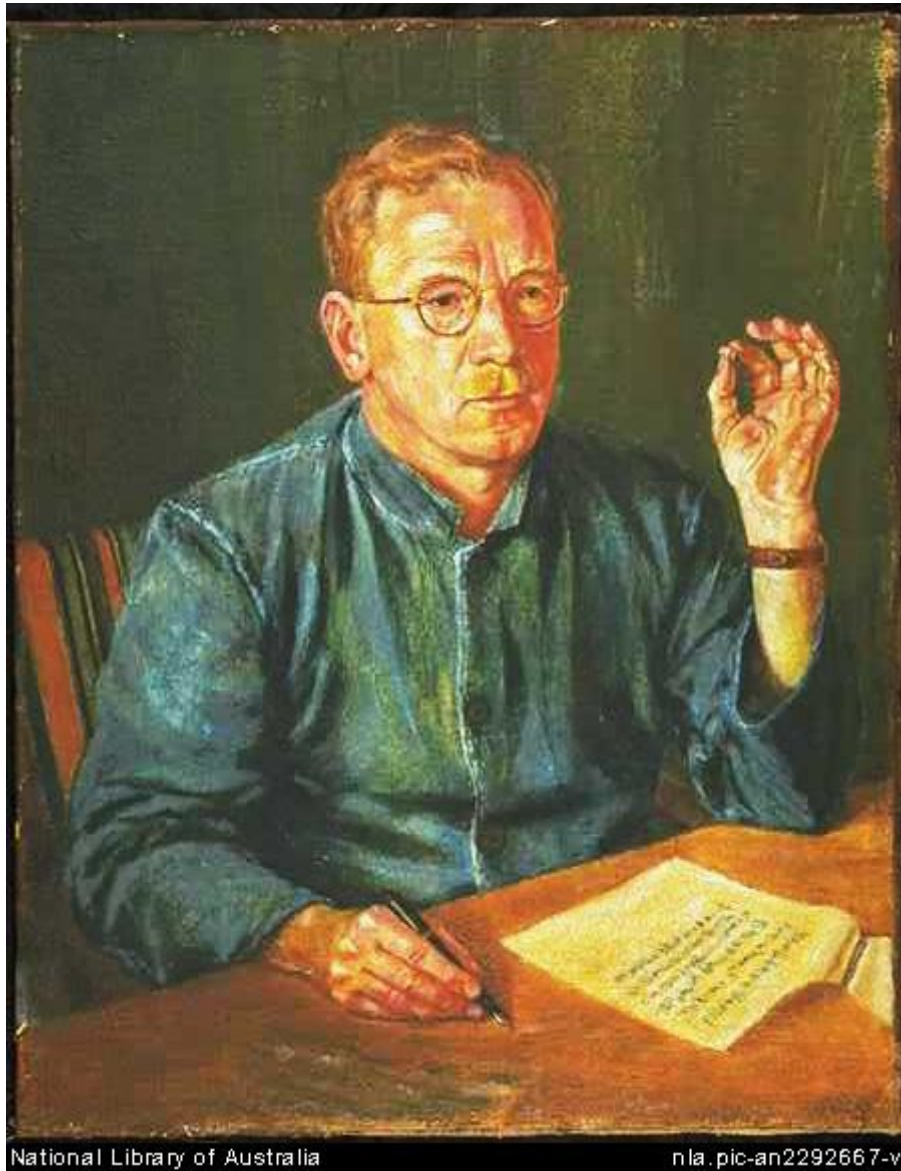
By permission of the Australian War Memorial AWM 064362.

Figure 4:



Compound 14D of Loveday Internment Camp lies to the right of the road bisecting Camp 14.
By permission of the Australian War Memorial AWM 122988.

Figure 5:



Portrait of Stephensen painted by fellow internee Edward Quicke in Tatura, 1945 and submitted for the Archibald Prize. By permission of Mr. Frank Quicke. Image: National Library of Australia nla.pic-an2292667.